



SCHUYLKILL COMMUNITY  
ACTION

***2018-2019***  
***Annual Report***

A YEAR OF ACCOMPLISHMENTS

# Words from the Executive Director:

Fiscal year 2018 represented another successful year for Schuylkill Community Action culminating in being named the Schuylkill County Chamber of Commerce Non-Profit of the Year. This achievement would not have been made possible without a strong commitment from our Board of Directors, dedicated staff that truly care about Schuylkill County and the residents we serve, and the support from our local community partners.

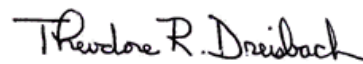
Community Action's motto is helping people, changing lives and we recognize this cannot be done alone. As the primary low-income service provider and anti-poverty agency in Schuylkill County, we pride ourselves on making a true impact on the people and communities we serve. During the year, SCA programming impacted 16,208 individuals, many of which were able to access multiple programs. Additionally, 530 Schuylkill County homes were improved through various rehabilitation and weatherization programming, in an effort to increase the value, efficiency, and safety of the homes and prevent future blight that has already adversely impacted many of our local communities.

SCA is committed to staying on the forefront of efforts to eliminate poverty in our local communities. We would like to thank our team and our community partners for the great work they have done and continue to do. With that, please take time to review our Fiscal Year 2018-2019 Annual Report, which highlights some of the major accomplishments from the past year.

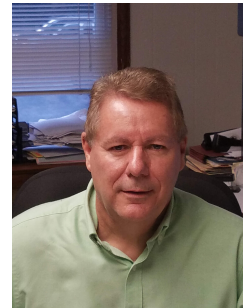
## Our Mission

The primary purpose of SCA shall be to coordinate and focus all available resources upon the needs of low-income Schuylkill County residents enabling them to obtain adequate, affordable housing and secure the opportunities necessary to achieve self-sufficiency.

Respectfully,



Theodore R. Dreisbach  
Executive Director



**SCA served 6,534 households through various SCA programs during the year. Many of these households accessed multiple programs in an effort to achieve self-sufficiency.**



**We are in this together. SCA volunteers donated 13,751 hours helping SCA achieve its mission.**



**During fiscal year 2018-2019, SCA programming impacted 16,208 low-income Schuylkill County residents.**

# Board of Directors

## 2018-2019 Board of Directors

### Private Sector:

Sarah Donohue- President  
 Norm Zwolenik- Vice President  
 Bryan Geiger  
 John Patton  
 Dave Bekisz  
 Trudy Umholtz  
 Reginald Edwards

### Public Sector:

Chairman Commr. George Halcovage  
 Rep: Theresa Santai Gaffney  
 Commr. Frank Staudenmeier  
 Rep: Paul Buber  
 Commr. Gary Hess  
 Rep: Paul Straka  
 Sen. David Argall  
 Rep: Mary Beth Dougherty  
 Mayor James Muldowney  
 Rep: Mary Ann Dragna- Secretary  
 Sheriff Joseph Groody  
 Rep: Brian Tobin  
 Dan Lynch

### Low-Income Sector:

Rose Marteslo  
 Alt: Rhonda Weaver  
 Jean Haberl  
 Alt: Bill Applegate  
 Envoy Brad Harris  
 Alt: Mary Metzger  
 Maria Doyle  
 Alt: Pete Keitsock  
 Shirley German  
 Alt: Verna Ebling  
 Deanna Mease  
 Alt: Jody Dunnigan  
 Sean Haldeman  
 Alt: Amy Wahalec



SCA would like to recognize Ken Stolarick, M&T Bank, for his dedicated service to the Board of Directors. Ken is retiring from the Board of Directors after 33 years. During his tenure, Ken served various officer roles including Vice President and Treasurer. Ken's expertise and commitment to the agency will be surely missed.

## SCA Financial Impact

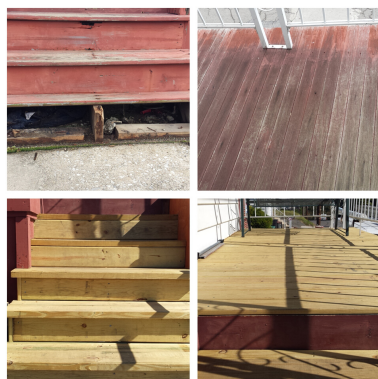
### Statement of Activities for year ending 6/30/2019

2018-2019 Revenue		
Federal	\$ 1,866,662	53%
State	\$ 469,733	13%
Local	\$ 136,541	4%
Fee for Service	\$ 757,472	22%
Rental	\$ 107,509	3%
Contributions	\$ 172,689	5%
<b>Total Revenue</b>	<b>\$ 3,510,606</b>	<b>100%</b>
2018-2019 Expenditures		
Personnel	\$ 1,608,153	
Contracted Services	\$ 256,811	
Legal/Audit Services	\$ 15,334	
Travel and Training	\$ 7,266	
Space Costs	\$ 173,128	
Office Expenses and Supplies	\$ 27,470	
Dues and Publications	\$ 4,121	
Insurance	\$ 42,438	
Advertising	\$ 613	
Vehicle Expenses	\$ 25,051	
Depreciation	\$ 77,924	
Miscellaneous Expenses	\$ 5,490	
Direct Program Services	\$ 1,378,737	
<b>Total Expenditures</b>	<b>\$ 3,622,537</b>	
<b>Decrease in net assets</b>	<b>\$</b>	<b>111,931</b>

# Housing Rehab Programs



**City of Pottsville**– 10 owner-occupied properties in the city received major rehabilitation to bring the property up to code. The project was made possible through a HOME grant received by the City. Pictured above: Before and After photos of bathroom renovations.



**Borough of St. Clair**– 10 Borough residents had major rehabilitation measures completed on their home to address code violations. Pictured above: Before and after photos from a porch renovation.

## Did You Know?

The median age of Schuylkill County homes is 1943, with over 48% of homes being built before 1940. This accounts as the oldest County housing stock in Pennsylvania.

**Senior Disabled Repair Program**– 10 homes received moderate rehabilitation of their homes with funds provided by the Schuylkill County Affordable Housing Trust Fund. Pictured below: Before and after photos of a shower with accessibility modifications.



## Weatherization Repair Programs

### LIHEAP Pilot WxRP

- 10 Homes had health and safety issues addressed.
- 26 residents, including 4 elderly and 8 children, experienced improved living conditions as a result of the program.
- Each of the 10 previously deferred properties have been weatherized.

### Neighborhood Assistance WxRP

- 5 homes had dangerous mold issues remediated.
- 8 individuals, including 4 elderly and 2 children, experience improved living conditions as a result of the program.
- Each of the 5 previously deferred properties have been weatherized.

### PHARE WxRP

- 10 homes had health and safety issues addressed.
- \$5,769 was the average cost of repairs required to address health and safety concerns.
- 8 of the 10 previously deferred properties have been weatherized.



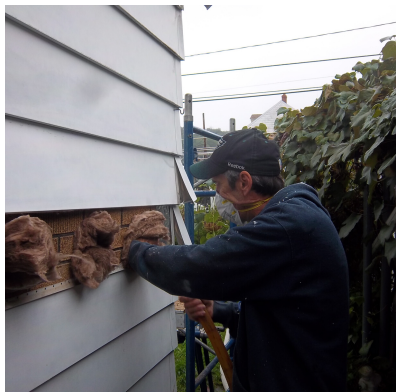
# Weatherization and Utility Assistance

**500 homes and 1,289 total individuals experienced benefits from an SCA administered Weatherization program. Households were served through programs supported by the Department of Energy, LIHEAP, and PPL Utilities.**



**29 Households improved or maintained their home through the LIHEAP Wx Program.**

**27 Households increased the energy efficiency of their home through the DOE funded Wx Program.**



**183 Households had heating systems repaired or replaced through the LIHEAP Crisis Program**



**264 Households reduced energy burden in their home through participation in the PPL Utilities WRAP program.**

## Utility Assistance Programs

- **4,436 Households reduced their electricity burden through participation in the PPL Utilities OnTrack program.**
- **246 homes received heating assistance via a grant through PPL Utilities Operation Help program.**
- **347 low-income households were able to establish PPL electric services through a security deposit waiver.**
- **72 Households received assistance through UGI's CAP and Operation Share programs to help reduce the burden of their gas bill.**

Utility Assistance Programs made possible through partnerships with:



# Homeless Services

SCA addresses homelessness for Schuylkill County residents in a multitude of ways, including Emergency Shelter, Transitional Housing, and Rapid Rehousing. Below is an overview of each service and how it was able to impact homeless County citizens:

## Emergency Shelter

SCA is able to provide emergency shelter for homeless households through motel vouchers. Typical stay at the motel is 5-7 nights and targets homeless households ineligible for the local overnight shelter.

### ES Data FY'18-19

- **54 Households received emergency shelter.**
- **84 individuals alleviated their housing crisis through shelter at a local motel.**
- **295 nights of shelter were provided.**

## Bridge House

Bridge House is a transitional housing program located in the City of Pottsville.

While residing at Bridge House, clients receive intensive case management services enabling them to establish and achieve goals to move towards self-sufficiency.

### Bridge House Data FY '18-19

- **5,639 Nights of shelter were provided.**
- **27 homeless households were sheltered through the program.**
- **8 households were able to successfully complete the program and move into permanent housing.**
- **4 of 8 or 50% of Drug Treatment Court clients were able to maintain compliance of both programs.**



## Rapid Rehousing

Homeless households are able to access "Safe and Affordable" rental housing through the Emergency Solutions Grant (ESG) Rapid Rehousing program. The program provides financial assistance, rental assistance, case management and credit repair services in an effort to stabilize their housing situation. ESG rapid rehousing is conducted in partnership with the County of Schuylkill, Pottsville Housing Authority, and the Schuylkill County Housing Authority.

### Rapid Rehousing Day FY '18-19

- **50 households received rental assistance and case management in an effort to stabilize their housing situation.**
- **114 formerly homeless individuals, including 42 children were able to secure safe and affordable rental housing that alleviated their housing crisis.**

## Meet Newt:

Newton Mull (pictured left) was SCA's nominee for the Community Action Association of Pennsylvania's Self-Sufficiency Progress Award. Newt is a graduate of SCA's Bridge House program. He was referred to the program by the Schuylkill County Drug Treatment Court and moved in following the completion of his in-patient rehab.

Prior to program referral, Newt had a history of drug and alcohol abuse that derailed his life leading to several stints in and out of jail. While facing significant prison time, Newt was accepted into the Drug Treatment Court program. During rehab and his time in Bridge House, Newt began dedicating his life to his treatment and helping others struggling with addiction and recovery. Newt was able to earn his Certified Recovery Specialist Certificate in June of 2018, and has been employed in that role ever since. Newt has been clean and sober since December 10, 2016.



The mission of the Schuylkill Food Network is to empower local communities in their efforts to provide food for all area residents in need. The Schuylkill Food Network is made up of 18 volunteer operated pantries. Pantries are located in Ashland, Girardville, Mahanoy City, McAdoo, Minersville, New Ringgold, New Philadelphia, Nuremberg, Pine Grove, Port Carbon, Pottsville, Ringtown, Schuylkill Haven, Shenandoah, St. Clair, Tamaqua, Tremont, and Valley View.

## **Fiscal Year '18-'19 Highlights**

- **Over 1 million pounds of food distributed during the 161 distributions across the network.**
- **Pantries were visited 14,392 times during the fiscal year.**
- **The estimated value of food distributed through the network was \$657,541, which included \$117,876 of donated food made possible through the operation of the boxed refrigerated food truck.**
- **7,060 individuals increased their food security by accessing food through the network.**
- **208 children and 526 adults had their food crisis alleviated by accessing the emergency food pantry at the SCA main program service office.**

## **Financial Education**

**9**

Checking and/or savings accounts were opened by Financial Education participants

**63**

Households received one-on-one financial counseling and increased their ability to manage their personal finances

**148**

Households increased their financial literacy through their participation in financial education workshops

**146**

Households were provided with basic budgeting skills to assist them in developing a functional household budget.

## **Housing Counseling**

SCA's Housing Counseling program provides free pre-purchase and post-purchase counseling allowing low-income Schuylkill County residents to purchase a home or prevent foreclosure on their home.

**21**

Low-to-moderate income Schuylkill County residents were able to purchase their first home by completing Home Buyer Workshops or Pre-closing workshops.

**24**

Households prevented or postponed foreclosure by participating in the Sch. County Mortgage Diversion program. Eight households were approved for mortgage modification.

**45**

Households prevented or postponed foreclosure proceedings by participating in the Home Emergency Mortgage Assistance Program, 13 of which received financial assistance for the loan.



**SCHUYLKILL COMMUNITY  
ACTION**

NON PROFIT  
US POSTAGE PAID  
POTTSVILLE PA  
PERMIT NO 689

This publication is financed, in part, by a Community Service Block Grant from the Pennsylvania Department of Community & Economic Development.

## For Services or Information please contact:

### Main Program Office:

225 North Centre Street  
Pottsville, PA 17901

Phone: (570)622-1995

Mon-Fri (8:00 am-4:00pm)

### Tamaqua Office:

Salvation Army Office Building

105 West Broad Street

Tamaqua, PA 18252

Phone: (570)668-1038

Tues, Wed (8:00 am-4:00pm)

### Administrative Office:

206 North Second Street  
Pottsville, PA 17901

Phone: (570)622-1995

Mon-Fri (8:00 am-4:00pm)



[www.schuylkillcommunityaction.com](http://www.schuylkillcommunityaction.com)



EQUAL HOUSING  
OPPORTUNITY



Helping People, Changing Lives